

1 — 2  
THROUGH  
64

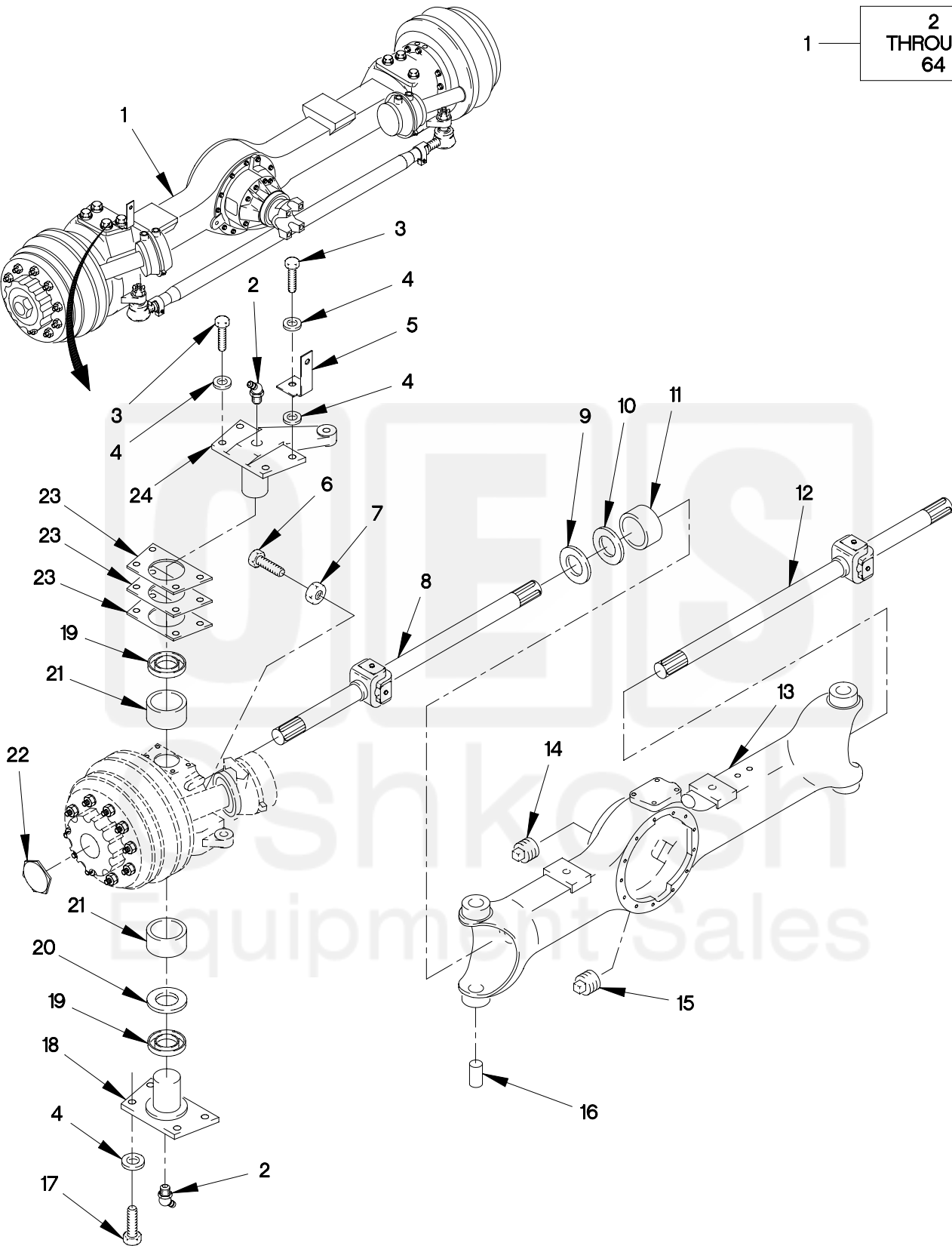
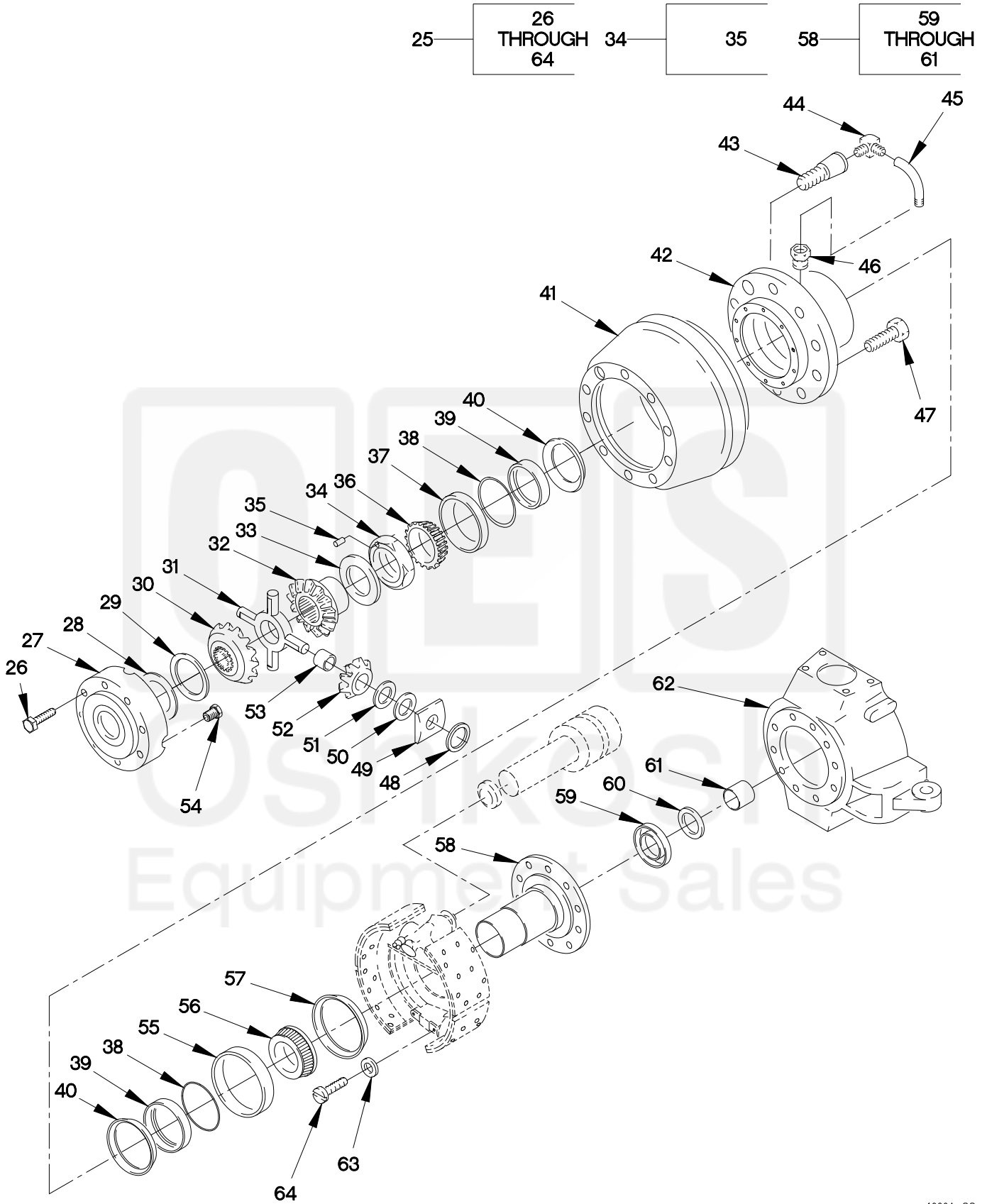


FIGURE 157. FRONT AXLE AND WHEEL END ASSEMBLY (SHEET 1 OF 2)

SECTION II

TM 9-2320-366-24P-1



1000A-2C

FIGURE 157. FRONT AXLE AND WHEEL END ASSEMBLY (SHEET 2 OF 2)

SECTION II

TM 9-2320-366-24P-1

(1) ITEM NO	(2) SMR CODE	(3) CAGEC	(4) PART NUMBER	(5) DESCRIPTION AND USABLE ON CODE (UOC)	(6) QTY
GROUP 1000: FRONT AXLE ASSEMBLY FIG.157 FRONT AXLE AND WHEEL END ASSEMBLY					
1	PAFHH	19207	12421816	AXLE ASSEMBLY,AUTO.....	1
2	PAFZZ	78500	1199-B-3226	.FITTING,LUBRICATION PART OF KIT P/N KIT4706 PART OF KIT P/N KIT4706 .....	4
3	PAFZZ	78500	S-21418-A-2	.SCREW,CAP,HEXAGON H PART OF KIT P/N KIT4706 PART OF KIT P/N KIT4706 .....	4
4	PAFZZ	78500	1229-M-1625	.WASHER,FLAT PART OF KIT P/N KIT4706 PART OF KIT P/N KIT4706 ....	18
5	PAFZZ	19207	12420331	.BRACKET,ANGLE.....	2
6	PAFZZ	78500	26X1024	.SCREW,CAP,HEXAGON H.....	2
7	PAFZZ	96906	MS51967-17	.NUT,PLAIN,HEXAGON 9/16-12.....	2
8	PAFZZ	78500	A2-3202-A-9621	.UNIVERSAL JOINT,VEH.....	1
9	PAFZZ	78500	A-1205-D-2344	.SEAL,PLAIN ENCASED.....	2
10	PAFZZ	78500	1229-T-4570	.BEARING,WASHER,THRU.....	2
11	PAFZZ	78500	1225K817	.BUSHING,SLEEVE.....	2
12	PAFZZ	78500	A3-3202-A-9621	.UNIVERSAL JOINT,VEH.....	1
13	XAFZZ	78500	C23201Q7895XA	.HOUSING,MECHANICAL.....	1
14	PAOZZ	81348	WW-P-471ACBBUE	.PLUG,PIPE.....	1
15	PAOZZ	78500	1250-E-473	.PLUG,MACHINE THREAD DRAIN PLUG....	1
16	PAFZZ	78500	1246-E-655	.PIN,STRAIGHT,HEADLE PART OF KIT P/N KIT4706 PART OF KIT P/N KIT4706 .....	2
17	PAFZZ	78500	S-21416-A-2	.SCREW,CAP,SOCKET HE PART OF KIT P/N KIT4706 PART OF KIT P/N KIT4706 .....	12
18	PAFZZ	78500	3262W1219	.COVER,ACCESS.....	3
19	PAFZZ	78500	1205F2164	.SEAL,NONMETALLIC RO PART OF KIT P/N KIT4706 PART OF KIT P/N KIT4706 .....	4
20	PAFZZ	78500	1229K4119	.BEARING,WASHER,THRU PART OF KIT P/N KIT4706 PART OF KIT P/N KIT4706 .....	2
21	PAFZZ	78500	1225K1259	.BEARING,WASHER,THRU.....	2
22	PAOZZ	78500	1250T1086	.CAP,GREASE.....	2
23	PAFZZ	78500	2203Q9845	.SHIM .003 IN (.076MM) PART OF KIT P/N KIT4706 PART OF KIT P/N KIT4706 .....	1
23	PAFZZ	78500	2203R9846	.SHIM .005 IN (.127MM) PART OF KIT P KIT4706 .....	/N

SECTION II

TM 9-2320-366-24P-1

(1) ITEM NO	(2) SMR CODE	(3) CAGEC	(4) PART NUMBER	(5) DESCRIPTION AND USABLE ON CODE (UOC)	(6) QTY
23	PAFZZ	78500	2203S9847	.SHIM .010 IN (.254MM) PART OF KIT P KIT4706 .....	/N
24	PAFZZ	78500	3133B7178	.ARM,PIVOTING WHEEL.....	1
25	AFFFF	78500	A3333J4118	.WHEEL END ASSY LEFT HAND SIDE.....	1
25	AFFFF	78500	A4333J4118	.WHEEL END ASSY RIGHT HAND SIDE....	1
26	PAOZZ	78500	10X1563	..SCREW,CAP,HEXAGON H PART OF KIT P/N 4725 .....	12
27	PAOZZ	78500	3266-A-1275	..COVER,ACCESS PART OF KIT P/N 4725 .....	1
28	PAOZZ	78500	1229A4161	..BEARING,WASHER,THRU PART OF KIT P/N 4725 .....	1
29	PAOZZ	78500	1228J1154	..BEARING,WASHER,THRU PART OF KIT P/N 4725 .....	1
30	PAOZZ	78500	2234F1202	..GEAR,BEVEL PART OF KIT P/N 4725 ..	1
31	KFOZZ	78500	3278Z1118	..SPIDER,DIFFERENTIAL PART OF KIT P/N 4725 .....	1
32	PAOZZ	78500	2234E1201	..GEAR,BEVEL PART OF KIT P/N 4725 ..	1
33	KFOZZ	78500	2203J9500	..SHIM .012IN (.30MM) PART OF KIT P/N 4715,4726 .....	V
33	KFOZZ	78500	2203K9501	..SHIM .015IN (.38MM) PART OF KIT P/N 4715,4726 .....	V
33	KFOZZ	78500	2203L9502	..SHIM .020IN (.51MM) PART OF KIT P/N 4715,4726 .....	V
33	KFOZZ	78500	2203M9503	..SHIM .025IN (.64MM) PART OF KIT P/N 4715,4726 .....	V
33	KFOZZ	78500	2203N9504	..SHIM .031IN (.79MM) PART OF KIT P/N 4715,4726 .....	V
34	PAOZZ	78500	A1227X1480	..RETAINER,PACKING (WHEEL BEARING NUT) PIN (19X1067) INCLUDEDWITH THIS ASSEMBLY.....	1
35	XA	78500	19X1067	...PIN,STRAIGHT,HEADLE SOLD AS PART OF A1227X1480 ONLY.....	2
36	PAOZZ	60038	47686	..CONE AND ROLLERS,TA PART OF KIT P/N 4726 .....	1
37	PAOZZ	61220	47620	..CUP,TAPERED ROLLER PART OF KIT P/N 4726 .....	1
38	PAOZZ	78500	1229K3131	..RING,RETAINING.....	2
39	PAOZZ	78500	2297R6648	..SEAL,PLAIN PART OF KIT P/N 4726 ..	2
40	PAOZZ	78500	A-1205-Q-2435	..SEAL ASSY,CTIS PART OF KIT P/N 4726 .....	2
41	PAOZZ	78500	3219-W-4833	..BRAKE DRUM.....	1
42	KFOZZ	78500	A-333-A-4317	..HUB,WHEEL END ASSY PART OF KIT P/N 4726 .....	1
43	PAOZZ	78500	20X2123	..SCREW,MACHINE LEFT HAND PART OF KIT P/N 4727.....	1

SECTION II

TM 9-2320-366-24P-1

(1) ITEM NO	(2) SMR CODE	(3) CAGEC	(4) PART NUMBER	(5) DESCRIPTION AND USABLE ON CODE (UOC)	(6) QTY
43	PAOZZ	78500	20X2122	..SCREW,MACHINE RIGHT HAND PART OF KIT P/N 4727.....	1
44	PAOZZ	78500	2206D1018	..ELBOW,BOSS PART OF KIT P/N KIT ...	1
45	PAOZZ	78500	A-3196-X-1194	..TUBE ASSEMBLY,METAL PART OF KIT P/N 4726 .....	1
46	PAOZZ	78500	2297P3838	..SEAT,TUBE PART OF KIT P/N KIT ....	1
47	PAOZZ	78500	20X1577	..BOLT,FIREBRICK ANCH LEFT SIDE PART OF KIT P/N 4726 .....	1
47	PAOZZ	78500	20X1578	..BOLT,FINNED NECK RIGHT SIDE PART OF KIT P/N 4726 .....	1
48	PAOZZ	78500	5-X-1155	..O-RING.....	4
49	PAOZZ	78500	1229W4157	..BEARING,WASHER,THRU.....	4
50	PAOZZ	78500	1228K1155	..BEARING,WASHER,THRU PART OF KIT P/N 4725 .....	4
51	PAOZZ	78500	1229Z4160	..BEARING,WASHER,THRU PART OF KIT P/N 4725 .....	4
52	PAOZZ	78500	2233J1102	..GEAR,BEVEL PART OF KIT P/N 4725 ..	4
53	PAOZZ	78500	1228H1152	..BEARING,WASHER,THRU PART OF KIT P/N 4725 .....	4
54	PAOZZ	78500	1850T 124	..PLUG,PIPE,MAGNETIC PART OF KIT P/N 4725 .....	1
55	PAOZZ	60038	JM716610	..CUP,TAPERED ROLLER PART OF KIT P/N KIT,4726 .....	1
56	PAOZZ	60038	JM716649	..CONE AND ROLLERS,TA PART OF KIT P/N 4726 .....	1
57	PAOZZ	78500	A-1205-R-2254	..SEAL,PLAIN ENCASED PART OF KIT P/N 4726 .....	1
58	PAOOO	78500	A-3213-P-1758	..SPINDLE,MECHANICALL.....	1
59	PAFZZ	78500	A-1205-D-2344	...SEAL,PLAIN ENCASED.....	1
60	PAFZZ	78500	1229-T-4570	...BEARING,WASHER,THRU.....	1
61	PAFZZ	78500	1225K817	...BUSHING,SLEEVE.....	1
62	PAOZZ	78500	3111D3254	..SPINDLE,WHEEL,DRIVI.....	1
62	PAOZZ	78500	3111E3255	..SPINDLE,WHEEL,DRIVI.....	1
63	PAOZZ	78500	1229-Y-1507	..WASHER,FLAT.....	10
64	PAOZZ	78500	S2922A2	..SCREW,CAP,HEXAGON H.....	10

END OF FIGURE